

# 5 Grammar Conditionals

**A** Complete the sentences with the correct conditional forms. Then choose the best option (A, B or C) for you.

## What kind of employee or student are you?

- 1 What would you do if it \_\_\_\_\_ (be) six o'clock on Friday and you still hadn't finished an important project or assignment?
  - A I \_\_\_\_\_ (drop) everything and go home.
  - B I \_\_\_\_\_ (go) home, but I \_\_\_\_\_ (plan) to finish first thing on Monday.
  - C I \_\_\_\_\_ (stay) at work or in college until everything was finished.
- 2 What would you change about your work or study environment if you could?
  - A I \_\_\_\_\_ (bring) in the decorators and change everything.
  - B I \_\_\_\_\_ (change) a few things, but basically it's a good place to be.
  - C I \_\_\_\_\_ (not change) a thing – it's great.
- 3 Do you think you are in the right profession or on the right course?
  - A Not at all – I wish I \_\_\_\_\_ (choose) something different.
  - B It is for now, but who knows what I'll be doing ten years from now.
  - C Definitely! If only I \_\_\_\_\_ (start) earlier!
- 4 \_\_\_\_\_ (you / describe) your job or course as stressful?
  - A Definitely – I wish I \_\_\_\_\_ (not feel) stressed all the time.
  - B Not particularly. I \_\_\_\_\_ (leave) the job or course long ago if it had been stressful.
  - C No. I \_\_\_\_\_ (not say) it was stressful at all.
- 5 How would your work colleagues or fellow students describe you if we \_\_\_\_\_ (ask) them?
  - A They \_\_\_\_\_ (say) I wasn't very focused on my work.
  - B They \_\_\_\_\_ (tell) you I was a good worker or student but with other interests.
  - C They \_\_\_\_\_ (claim) I was the company's hardest worker.
- 6 Do you wish your job or course \_\_\_\_\_ (be) more interesting?
  - A Yes – I get quite bored sometimes.
  - B Not really – it has its good points and bad points.
  - C I couldn't ask for a more interesting job/course.

**B** Add up your scores then find out what kind of employee or student you are. Compare scores with a partner. Do you agree with the results?

**A answers = 3 points   B answers = 2 points   C answers = 1 point**

Score 6 to 8 – You are a great employee or student. You are hard-working, enthusiastic and love your job or course.

Score 9 to 11 – You are a good employee or student. Your job or course isn't perfect, but you like it a lot and you work hard.

Score 12 to 15 – You are a typical employee or student. Your job or course isn't perfect. It has its good and bad points, and if you get the chance, you might change job or course one day.

Score 16 to 18 – You are an unhappy employee or student. You wish you were doing something else.

# 5 Focus on ... *I wish ... and If only ...*

**A** Complete the wishes and regrets. Use the past simple or past perfect.

 **Ravi**

I wish I <sup>1</sup> \_\_\_\_\_ (not eat) so much chocolate every day. It really isn't good for me!

 **Olga**

I wish I <sup>2</sup> \_\_\_\_\_ (live) in a warmer country. I'd spend a lot more time outdoors.

 **Anna**

If only I <sup>3</sup> \_\_\_\_\_ (join) a gym sooner. Imagine how fit I would be now!

 **Joseph**

I wish I <sup>4</sup> \_\_\_\_\_ (work) shorter hours! I could do so much more sport in my free time!

 **Paola**

I wish I <sup>5</sup> \_\_\_\_\_ (learn) to play tennis well when I was younger – I'd love to join a club and keep fit that way.

 **Dani**

If only my friends <sup>6</sup> \_\_\_\_\_ (not be) so lazy. I'd be fitter and healthier if I didn't have such lazy friends!

 **Abigail**

I wish I <sup>7</sup> \_\_\_\_\_ (not waste) so much time on video games when I was young.

 **Andrea**

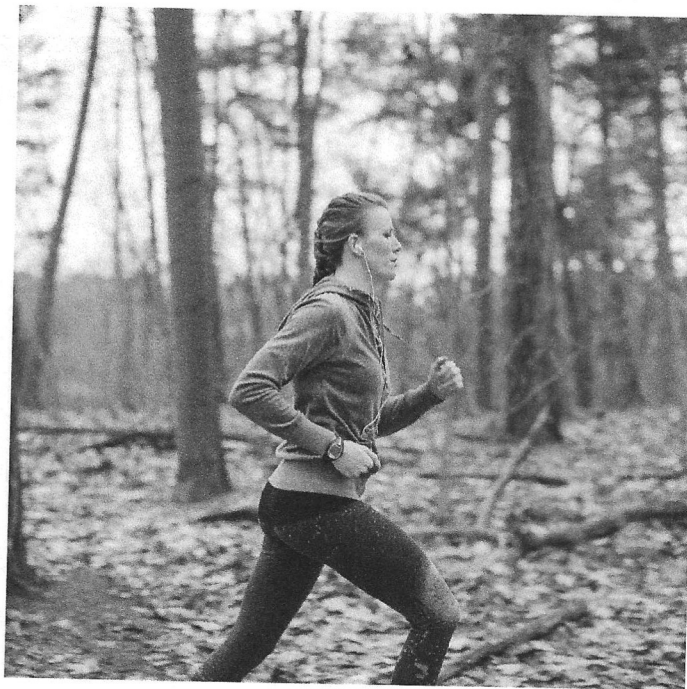
I wish I <sup>8</sup> \_\_\_\_\_ (know) what to eat! When I'm shopping, I never know which foods are healthy and which aren't!

 **Toshiko**

If only I <sup>9</sup> \_\_\_\_\_ (drink) less coffee! I love coffee – it's impossible to cut down!

 **Matteo**

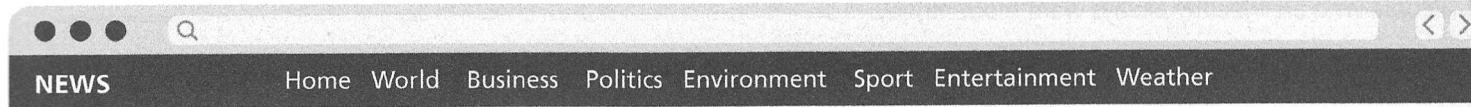
I wish I <sup>10</sup> \_\_\_\_\_ (enjoy) doing exercise. Truth is, I find it so boring.



**B** Are any of the sentences in A true for you? Write three of your own wishes using *I wish* and *If only*.



**A** Read the headlines and complete the opening lines of the newspaper stories with passive forms.



**Mayor elected for second term**

Last Thursday, a horse <sup>1</sup>\_\_\_\_\_ (elect) to serve as the city's mayor for a second term.

**Seabirds rescued**

In the last few days, hundreds of seabirds <sup>2</sup>\_\_\_\_\_ (rescue) by volunteers on local beaches.

**Homeowners must paint doors blue**

In a leaflet that <sup>3</sup>\_\_\_\_\_ (send) to households across the region last week, homeowners <sup>4</sup>\_\_\_\_\_ (ask) to paint their front doors blue.

**Dinosaur egg found**

An undamaged dinosaur egg <sup>5</sup>\_\_\_\_\_ (find) inside an extinct volcano.

**Students to retake exams**

Right now, students across the country <sup>6</sup>\_\_\_\_\_ (tell) to retake exams because the results of exams they took in May have been lost.

**National Theatre to close**

It <sup>7</sup>\_\_\_\_\_ (understand) that the National Theatre <sup>8</sup>\_\_\_\_\_ (close) over the course of the next two weekends for repairs.

**Actor wins award**

Last night, in a glittering ceremony, actor Giuseppe Rossi <sup>9</sup>\_\_\_\_\_ (present) with a lifetime achievement award.

**Match date changed**

The cup final between City and United <sup>10</sup>\_\_\_\_\_ (hold) at midday on 6th June.

**Initiative to reduce crime**

It <sup>11</sup>\_\_\_\_\_ (hope) that crime <sup>12</sup>\_\_\_\_\_ (reduce) as a result of a new crime initiative the police are planning to reveal next month.

**B** Choose a story from Exercise A and write the complete article, adding extra details.

---



---



---

# Focus on ... *the ... the ...*

## A Rewrite the sentences using *the ... the ...*

- 1 People who are wealthy always want more money.

The \_\_\_\_\_

- 2 People get better at listening as they get older.

The \_\_\_\_\_

- 3 Be open-minded when you read the news and you will have a greater understanding of the world.

The \_\_\_\_\_

- 4 Aim high and do well in life!

The \_\_\_\_\_

- 5 If you go to bed early, you will feel happy.

The \_\_\_\_\_

- 6 By not being biased, our newspaper serves the public.

The \_\_\_\_\_

- 7 Install as many alarms as you can in order to feel as safe as possible.

The \_\_\_\_\_

- 8 People who work hard are the most likely to get a promotion.

The \_\_\_\_\_

## B Work in pairs. Which sentences do you think are generally true? Are there any you don't agree with? Why?

## C Rewrite any of the sentences you disagreed with to make them true in your opinion.

---

---

---

---

---

---

---

---